



Key Information

Date of the Fact Sheet 31 May 2026

Inception Date 22 November 2025

Asset Class Diversified

Benchmark Morningstar AUS Aggressive Tgt Alloc NR AUD

Number of Underlying Holdings 14

Platform Availabilities & Minimum Investment Amount
CFS FC WS Super - No minimum
CFS FC WS Pension - \$20,000
CFS FC WS Investment - \$1,000

Minimum Investment Timeframe 9 Years

Ongoing costs to clients
CFS FC WS Super | Pension 0.60%* p.a.
CFS FC WS Investment 0.87% p.a.

Investment Objectives

The Salita CFS FC G85 Portfolio aims to achieve a return in excess of CPI + 3.25% p.a. over a rolling 9-year period, after fees. The portfolio is actively managed within allowable ranges and contains exposure to approximately 15% defensive assets and 85% growth assets.

About the manager

Salita Portfolio Services Pty Ltd (Salita) is a wholly owned subsidiary of Entireti Limited, and a Corporate Authorised Representative of Personal Financial Services ABN 26 098 725 145, AFSL 234459 ("Licensee"). Salita conducts professional investment research and investment management services including constructing and managing portfolios and/or investment strategies for model portfolios, managed accounts/ separately managed accounts (SMA) or other similar constructs.

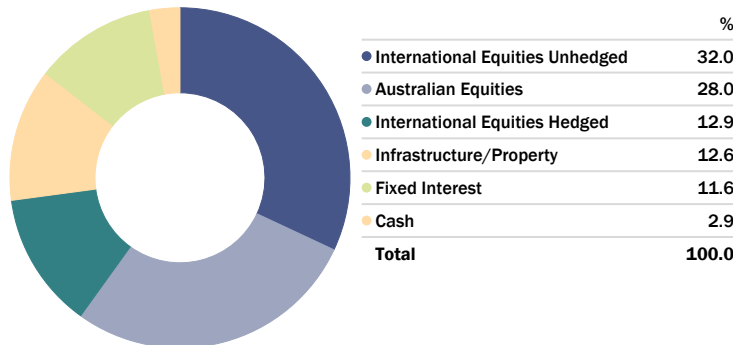
Trailing Returns

As of Date: 31/05/2026

	1 Mth (%)	2 Mths (%)	3 Mths (%)	Since Inception (%)
Salita CFS FC G85	1.81	4.86	-0.25	2.62
Morningstar AUS Agg Tgt Alloc NR AUD	3.08	7.73	1.96	4.77
Excess Return	-1.27	-2.87	-2.22	-2.15

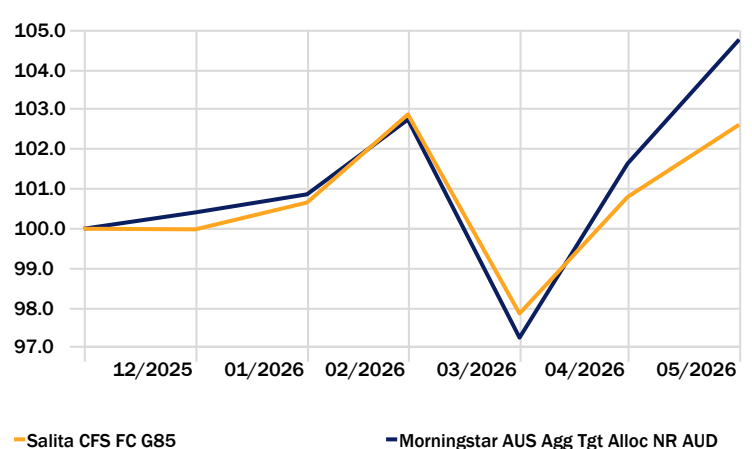
Asset Allocation

Portfolio Date: 31/05/2026



Investment Growth

Time Period: 30/11/2025 to 31/05/2026



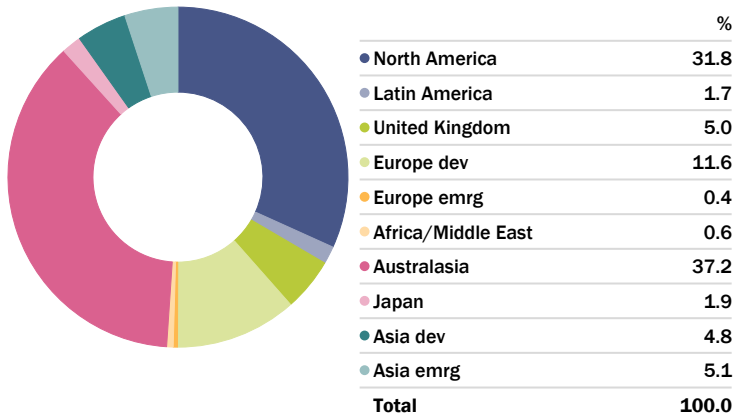
*Fees disclosed are indicative only. Please note that the fees do not include 0.20% platform administration fee for super and pension accounts, GST (where applicable), performance fees (where applicable) and transactions costs. Please refer to the relevant PDS for full details of fees. Portfolio performance is after investment manager fees and performance fees and before portfolio management, administration and platform fees. The Morningstar AUS Aggressive Target Allocation Index has 90% of its investments in growth assets and is compiled by Morningstar Inc. These figures represent historical performance only. Past performance should not be taken as an indication of future performance. Excess returns may differ due to rounding.

This Fact Sheet has been prepared by Salita Portfolio Services for general information purposes only. It does not take into account any investor's personal objectives, financial situation, or needs. Investors should review the relevant Product Disclosure Statement (PDS) and seek professional financial advice before making any investment decisions. This information has been prepared in good faith; however, we accept no liability for any errors or omissions.



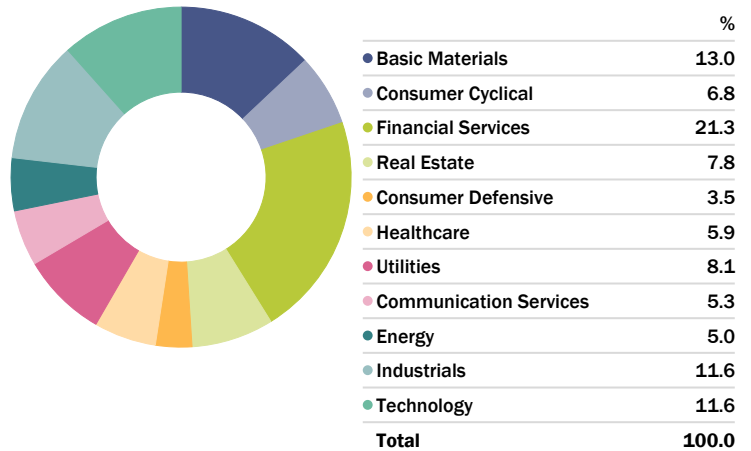
Equity Regional Exposure

Portfolio Date: 31/05/2026



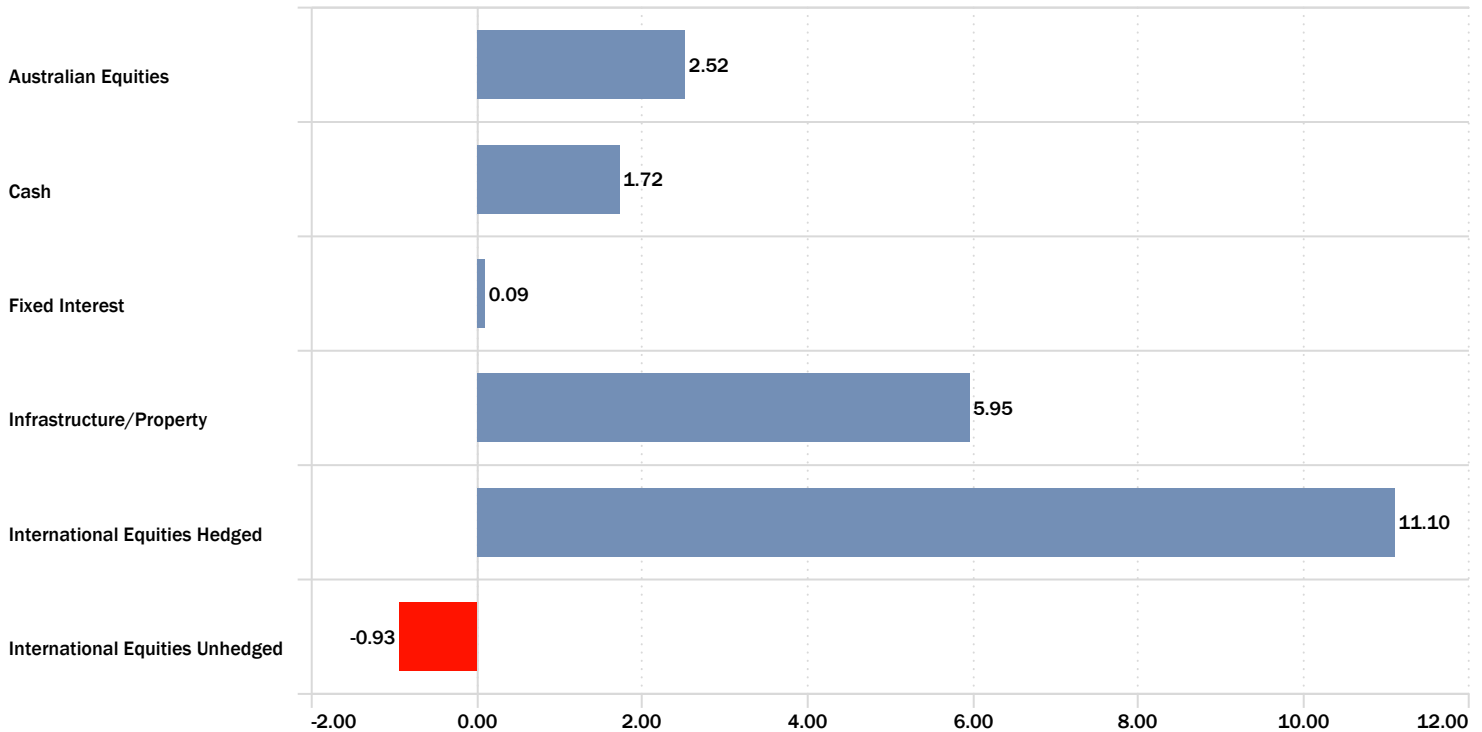
Equity Sectors (Morningstar)

Portfolio Date: 31/05/2026



Portfolio Asset Class Return

Time Period: 30/11/2025 to 31/05/2026



This Fact Sheet has been prepared by Salita Portfolio Services for general information purposes only. It does not take into account any investor's personal objectives, financial situation, or needs. Investors should review the relevant Product Disclosure Statement (PDS) and seek professional financial advice before making any investment decisions. This information has been prepared in good faith; however, we accept no liability for any errors or omissions.



Portfolio Position

Portfolio Date: 31/05/2026

	Portfolio Weighting %	1 Mth (%)	2 Mths (%)	3 Mths (%)	6 Mths (%)
International Equities Unhedged	31.96	—	—	—	—
Ironbark Brown Advisory Global Share	11.43	-1.33	-0.11	-4.44	-11.32
RQI Global Share Value	10.05	2.92	5.41	2.19	3.84
CFS Global Share Index	6.24	4.50	9.12	5.89	2.83
RQI Emerging Market Value	4.24	6.03	11.04	2.28	14.39
Australian Equities	27.97	—	—	—	—
Ausbil Australian Active Equity	8.11	3.04	6.30	-3.17	3.89
RQI Australian Value	7.95	2.90	4.25	-0.78	7.69
CFS Australia Share Index	6.90	1.18	3.33	-3.34	2.89
Pendal Smaller Companies	5.01	1.13	5.13	-5.07	-8.28
International Equities Hedged	12.94	—	—	—	—
CFS Global Share Index (Hedged)	12.94	4.76	13.11	6.79	11.10
Infrastructure/Property	12.63	—	—	—	—
ClearBridge RARE Infra Value	8.56	-2.15	-0.25	-3.43	5.63
Resolution Capital Global Property Securities	4.07	-0.31	6.75	-1.13	6.40
Fixed Interest	11.61	—	—	—	—
Western Asset Australian Bond	6.78	1.48	1.50	0.02	0.38
PIMCO Global Bond	4.83	0.83	1.37	-1.67	-0.31
Cash	2.88	—	—	—	—
First Sentier Strategic Cash	2.88	0.34	0.65	0.90	1.72

Portfolio Changes

There were no changes to the portfolio during May 2026.

This Fact Sheet has been prepared by Salita Portfolio Services for general information purposes only. It does not take into account any investor's personal objectives, financial situation, or needs. Investors should review the relevant Product Disclosure Statement (PDS) and seek professional financial advice before making any investment decisions. This information has been prepared in good faith; however, we accept no liability for any errors or omissions.